

The background of the slide is a photograph of a concrete bridge over water, with a yellow wave graphic overlaid on the left side. The bridge has several concrete pillars supporting the deck. The water is calm, and the sky is a soft, hazy blue.

Road to Zero

Vinay Maan



Road to Zero



Vision

An Aotearoa where no one is killed or seriously injured in road crashes



2030 Target

A 40 percent reduction in deaths and serious injuries (from 2018 levels)



Principles

Safe System

- » We promote good choices but plan for mistakes
 - » We design for human vulnerability
 - » We have a shared responsibility for improving road safety
 - » We strengthen all parts of the road transport system
-
- » Our actions are grounded in evidence and evaluated
 - » Our road safety actions support health, wellbeing and livable places
 - » We make safety a critical decision making priority



Focus areas

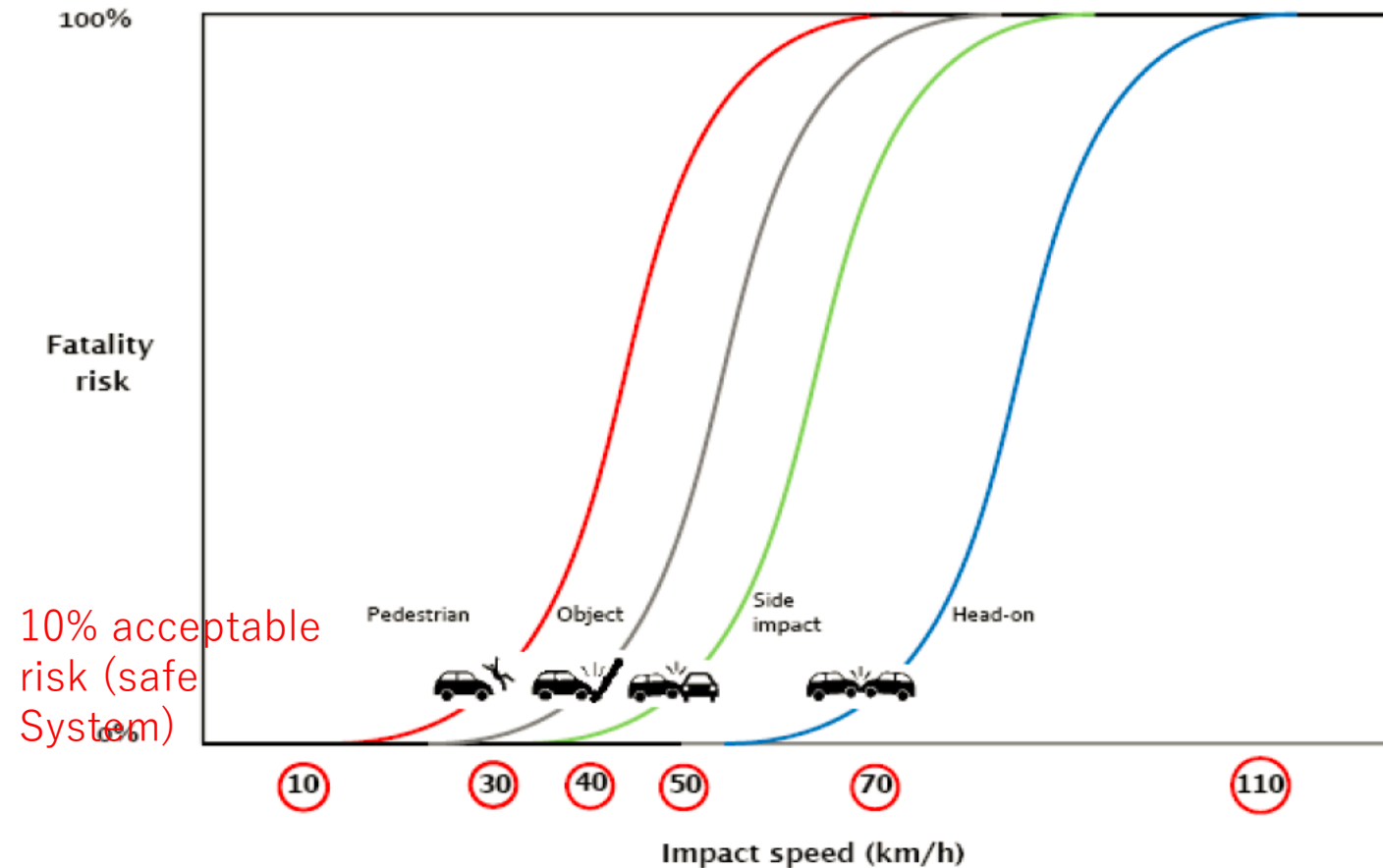
- » Infrastructure and speed
- » Vehicle safety
- » Work-related road safety
- » Road user choices
- » System management

Speed and Infrastructure Programme

- \$5B investment over 10 years
- 1,000km of median safety barrier
- >2,300 intersection treatments
- >7,000km of reduced speeds corridors

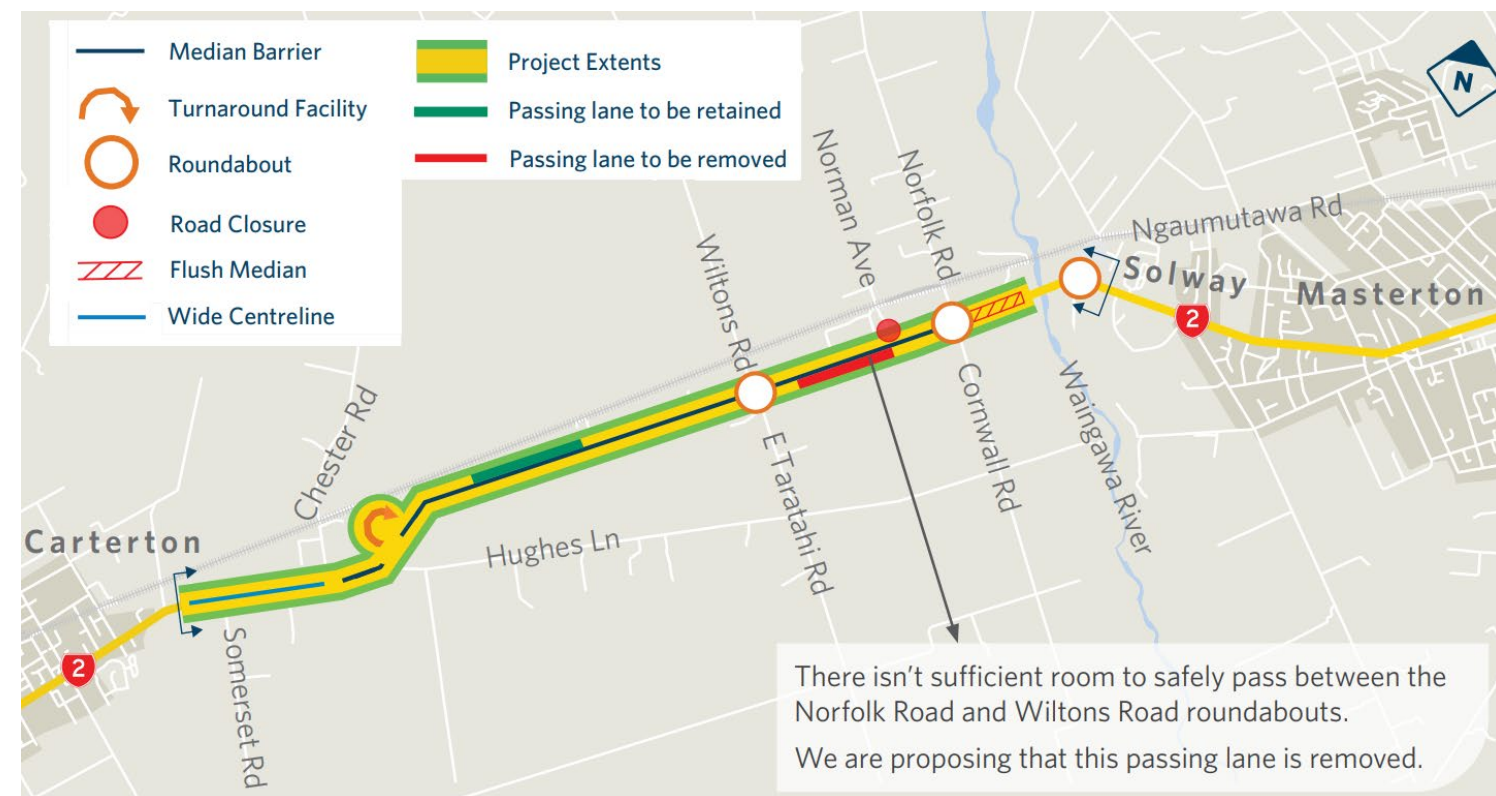
- Contributing towards **saving 600-650 DSIs / year**

Safe System



- Expect that people make mistakes
 - Targeted safety interventions to protect against significant hazards
- State Highway DSIs
 - ~50% head-on crashes
 - ~80-90% head-on, run-off road and intersections

SH 2 – Masterton to Carterton



Midblock corridor improvements:

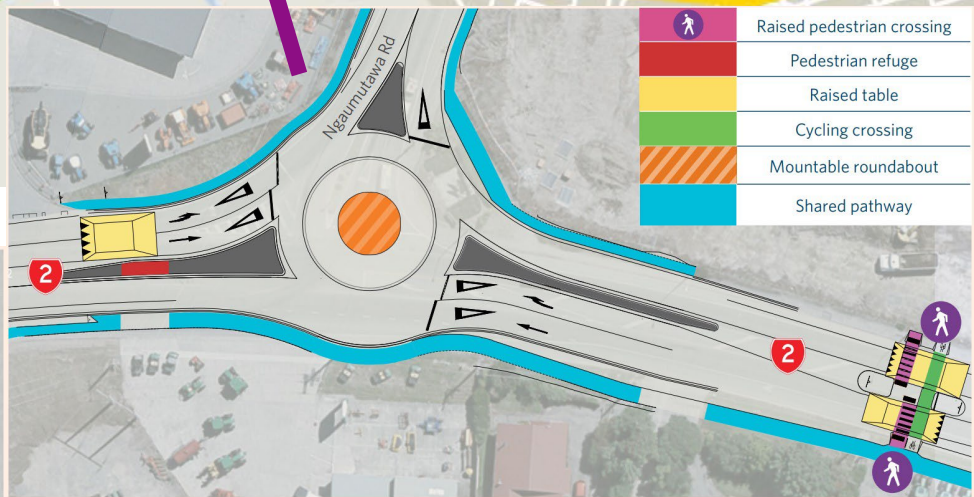
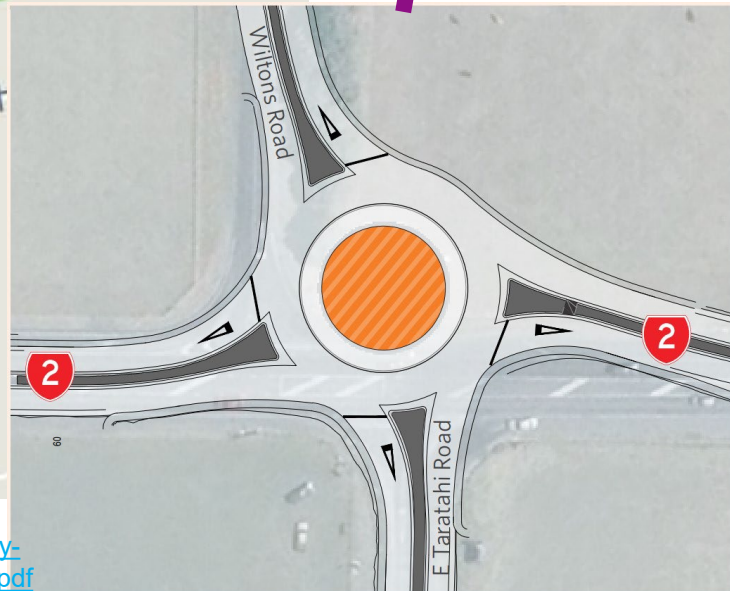
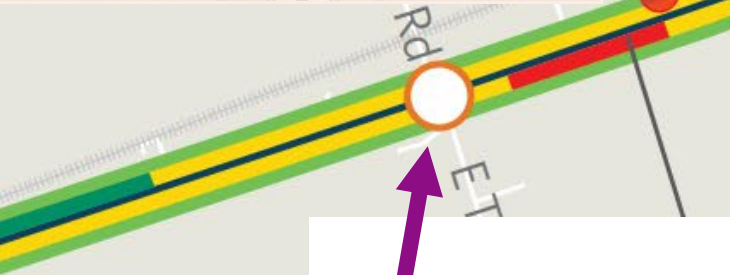
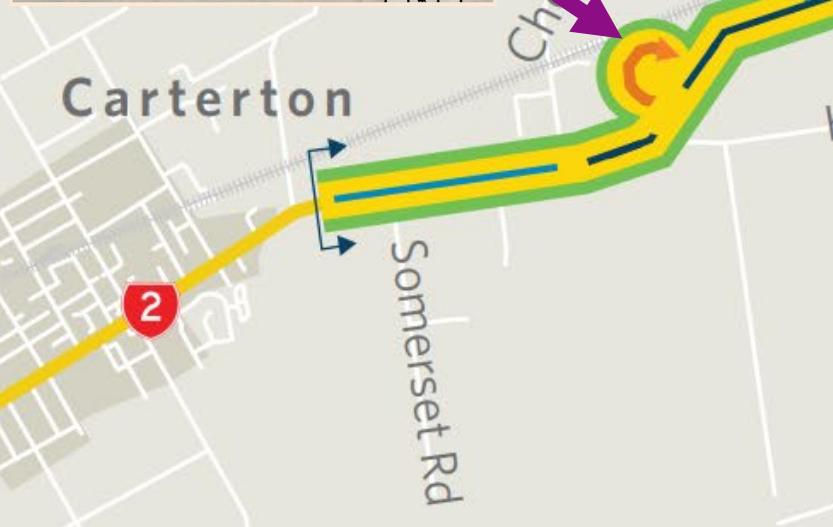
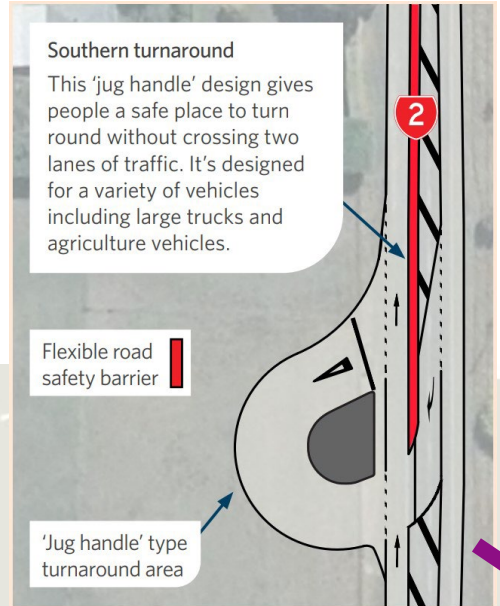
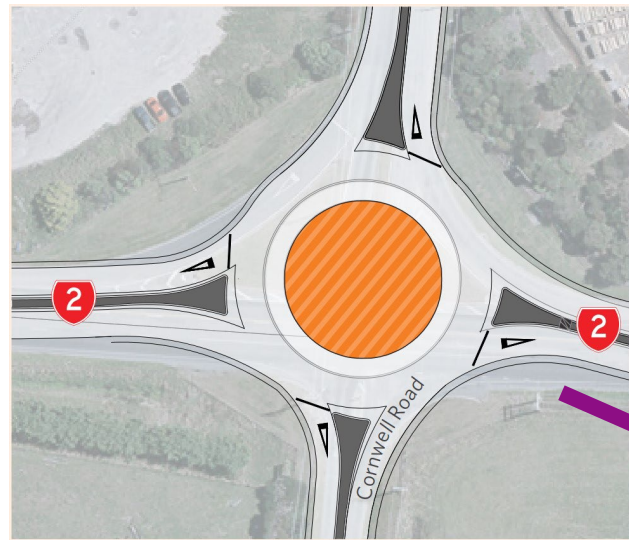
- 8.7km corridor
- 5.8km of flexible median safety barrier
- 0.9 km of wide centreline
- <3km of corridor widening
- Shoulders
 - 0.75m min. sealed width
 - 0.5m unsealed width
- Moving crown
- Avoid property acquisition


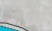
Southern turnaround

This 'jug handle' design gives people a safe place to turn round without crossing two lanes of traffic. It's designed for a variety of vehicles including large trucks and agriculture vehicles.

Flexible road safety barrier

'Jug handle' type turnaround area



-  Raised pedestrian crossing
-  Pedestrian refuge
-  Raised table
-  Cycling crossing
-  Mountable roundabout
-  Shared pathway

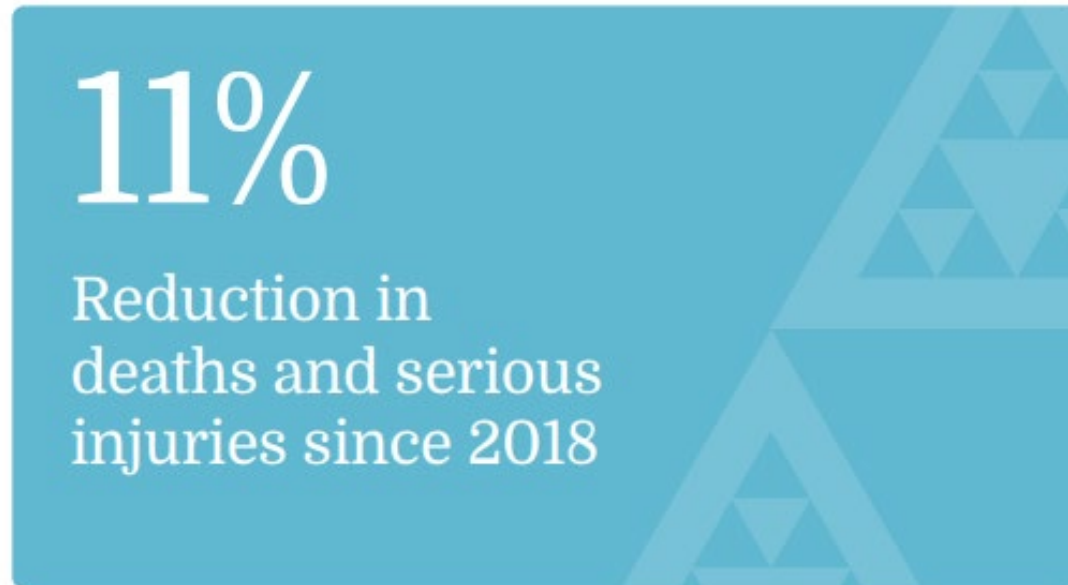
SH 1 – Ashley to Belfast



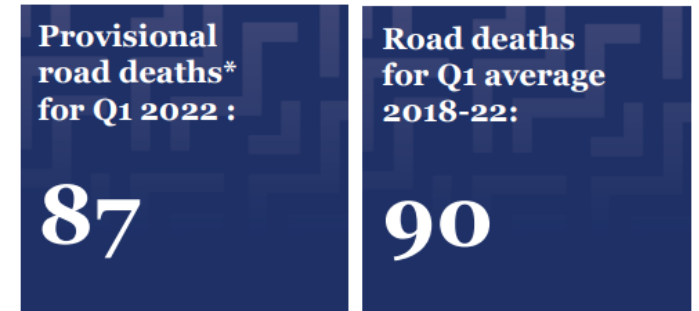
SH 1 – Dome Valley



Measuring progress



2021 (provisional)



Questions?