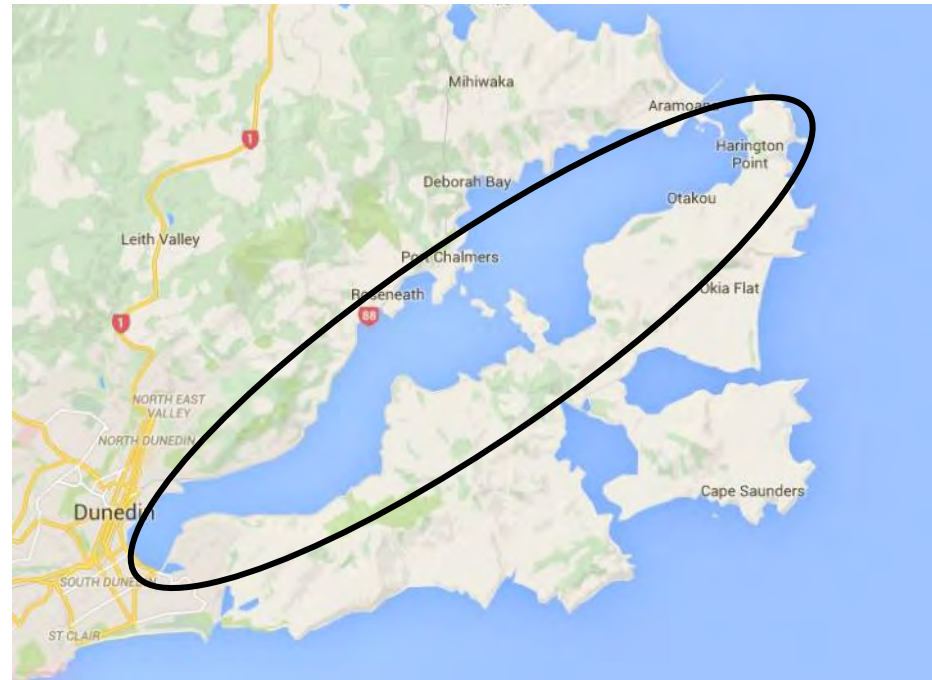


PENINSULA CONNECTION



OTAGO PENINSULA

- Population – 4500
- Three Primary Schools
- Higher than average employment levels
- Higher than average vehicle ownership rates
- Limited public transport



OTAGO PENINSULA

- Tourism
 - Over 2 million visitors
 - 119 Cruise Ships 18/19
 - High proportion visiting the Peninsula
- Currently no safe pedestrian / cycle connections
- High accident rate
 - hazardous roadside features
 - geometric constraints
 - wide mix of road users
 - high traffic volumes on Portobello Road

Canadian tourist cyclist fights for life after crash (ODT - 14 Feb 2017)

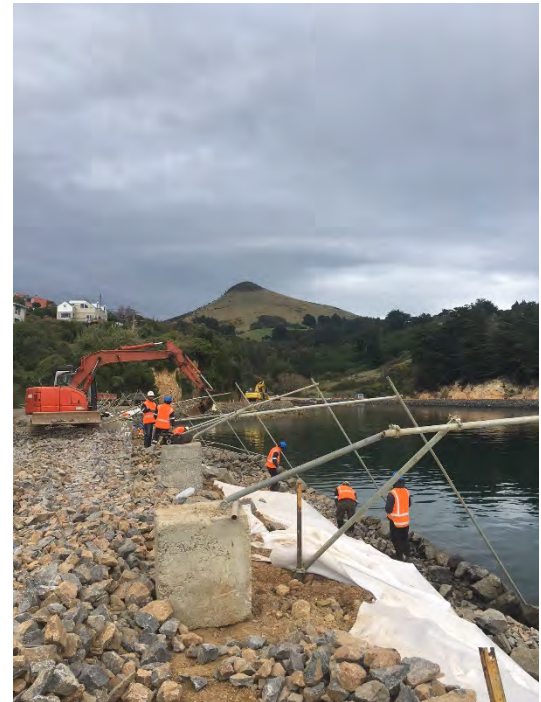


PENINSULA CONNECTION - BACKGROUND

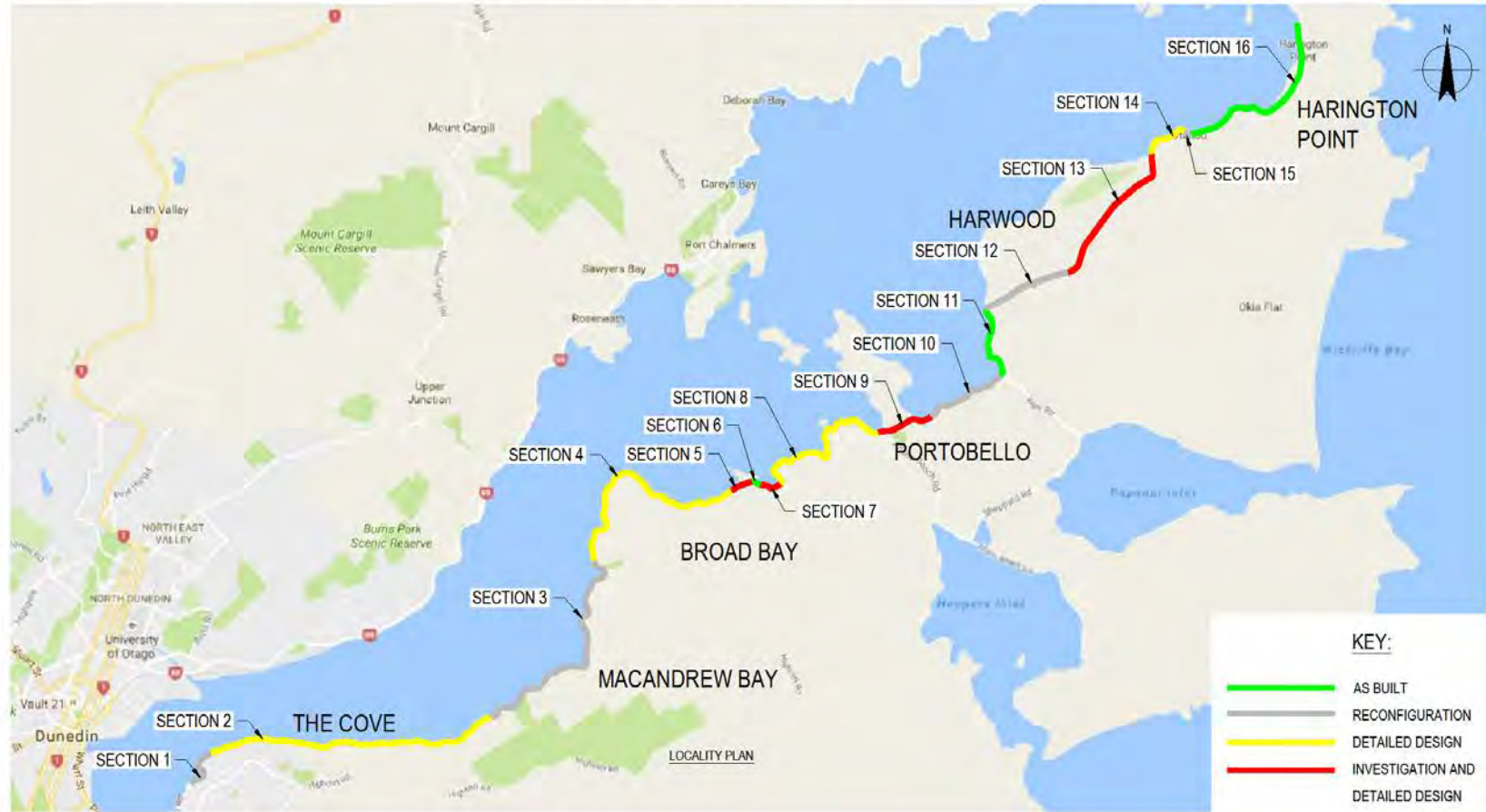
- Project commenced in 2008
- Separated into 16 sections for planning and funding purposes
- 8 sections have been completed (some reconfiguration required)

Objectives

- Improve safety for all road users along the Peninsula Road
- Provide for walking and cycling along the Peninsula Road corridor
- Improve efficiency and travel time reliability along the route



DCC - PENINSULA ROAD SAFETY IMPROVEMENTS



KEY:

- AS BUILT
- RECONFIGURATION
- DETAILED DESIGN
- INVESTIGATION AND DETAILED DESIGN

PRELIMINARY

No.	Revision	Date	Author	Checked	Approved
A	PRELIMINARY				



DO NOT SCALE

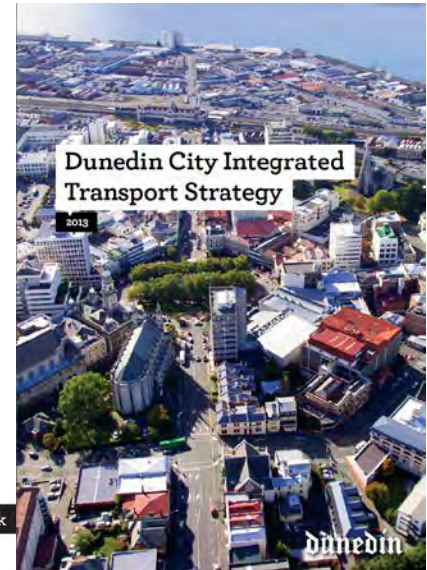
GHD Limited
Conditions of Use
This document may only be used by GHD clients (and any other persons who GHD has agreed can use this document) for the purposes for which it was prepared and must not be used by any other person or for any other purpose.

Drawn: N. MACKIE	Designer: N. DEVEREY
Drafting: [blank]	Design: [blank]
Checked: [blank]	Check: [blank]
Approved: [blank]	(Project Director)
Date: [blank]	Date: [blank]
Scale: NTS	This Drawing must not be used for construction unless agreed as Approved

Client: DUNEDIN CITY COUNCIL	Project: PENINSULA ROAD SAFETY IMPROVEMENTS
Title: OVERALL PLAN	Drawing No: 51-34272-G002
Scale: A1	Rev: A

STRATEGIC FIT

- Dunedin Integrated Transport Strategy 2013
 - 5 Objectives including
 - Resilience
 - Safety
 - Travel Choices
- Other DCC Strategic Objectives
 - Social Wellbeing (connected communities)
 - Economic Development (Tourism)
 - Parks and Recreation (connections)



Dunedin Strategic Framework



ENGAGEMENT

- Professional Services contract awarded 2016
- Concept Designs Completed
- Community meetings held
- Challenges around community expectations
- Identify champions for the project
- Team up with a contractor that cares about the community
- Keep the conversation going



BUDGET

- Initial budget set
- Updated estimates double
- Overwhelming support to deliver this project
- Tender prices 150% of estimates
- Partnership approach between the team to deliver savings



KEY FEATURES

- Widened carriageway
- Shoulders
- Sufficient lane width for lane true tour coach shared path
- 3m shared path to Portobello Road
- 2.5m shared path to Harrington Point Road
- Off line bus stops



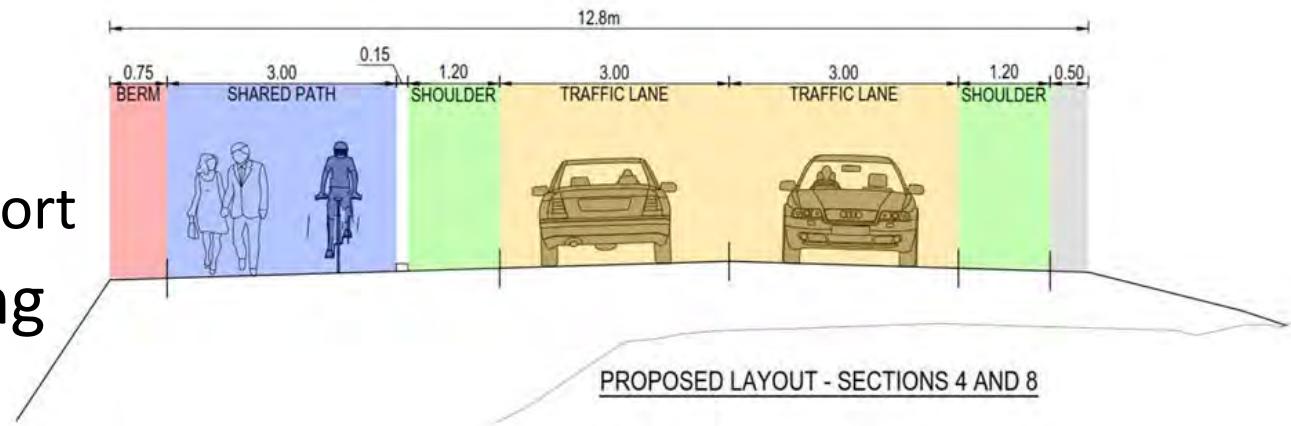
KEY FEATURES – CURRENT SECTIONS 2,4,8 AND 14

- Average 6m reclamation width
- 10.5km seawall (47,000m² being approx. 50,000t of hand placed facing)
- 240,000 m³ bulk fill
- 170,000 m² geotextile
- 2.7km culvert extensions
- 170,000 m² pavement
- 7000 separator blocks



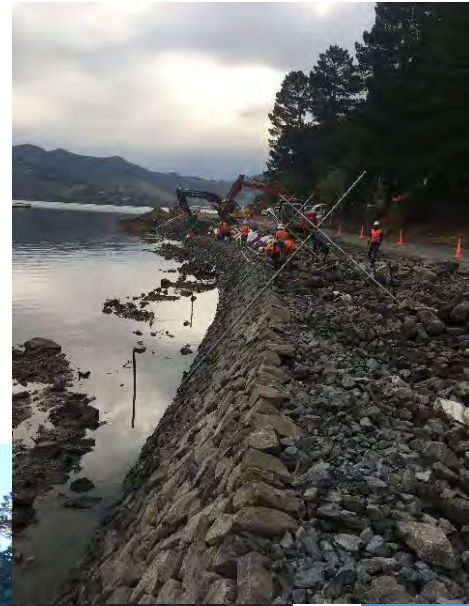
KEY CHALLENGES - CURRENT SECTIONS

- Competing Priorities
 - Different Cycle Groups
 - Strong and fearless
 - Enthused and confident
 - Interested but concerned
 - Pedestrians
 - Tourists
 - Public Transport
- Future Proofing
 - Sea level



KEY CHALLENGES – CURRENT SECTIONS

- Receiving Environment
 - Rock Habitat
 - Water Quality
- Iconic Features
 - Bus Stops
 - Rock Outcrops



Questions?

