

Christchurch Southern Motorway Stage 2

Environmental Protection Authority phase

REAAA presentation



Who am I?

The project – key dates and numbers

Project structure

EPA process

Outcome and key success factors

Detailed design phase

Questions



David Mallett
Civil Engineer

Acknowledgements

Steve Proud – NZTA Project Manager

Gary Payne – Consultant Team Leader

Mary O’Callahan – Planning Manager

Dave Aldridge – Design Manager



The project

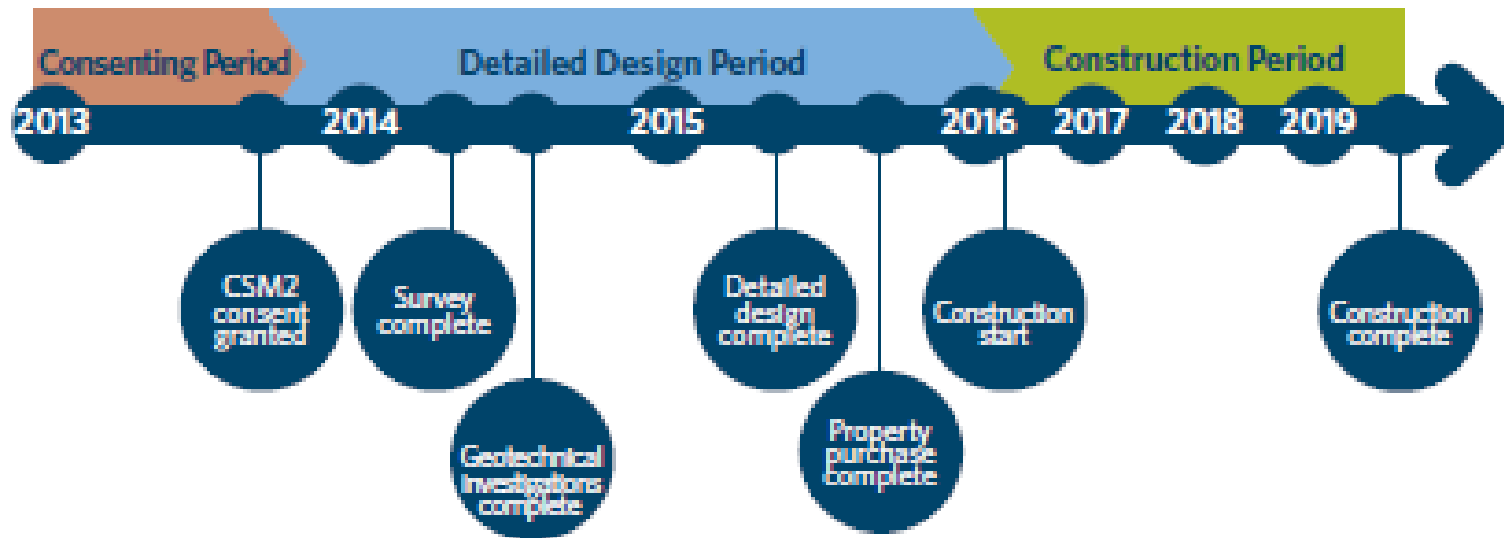
CSM2



CSM2 key dates

CSM2

- 2007 CRETS
- 2009 Scoping Study
- 2010-2013 I+R phase
- 2012-2013 EPA phase
- 2013-2015 D+PD phase
- 2016-2020 Construction



CSM2 by numbers

CSM2

- 12.5 km long
- 9 structures
- 4 interchanges
- \$220 M construction cost
- 36,000 vpd

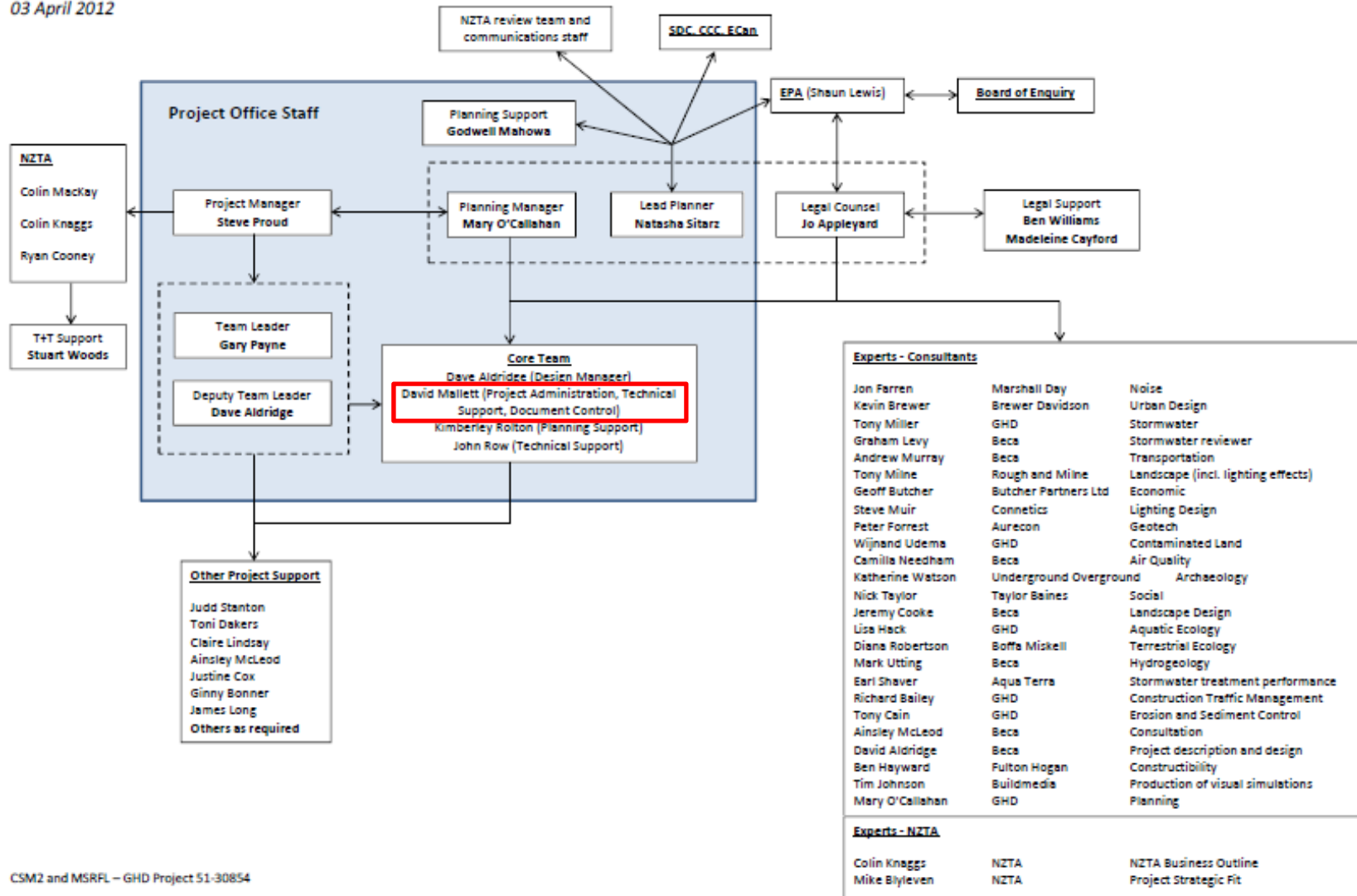


Project structure

CSM2

CSM2 and MSRFL Project – EPA Phase Organogram

03 April 2012

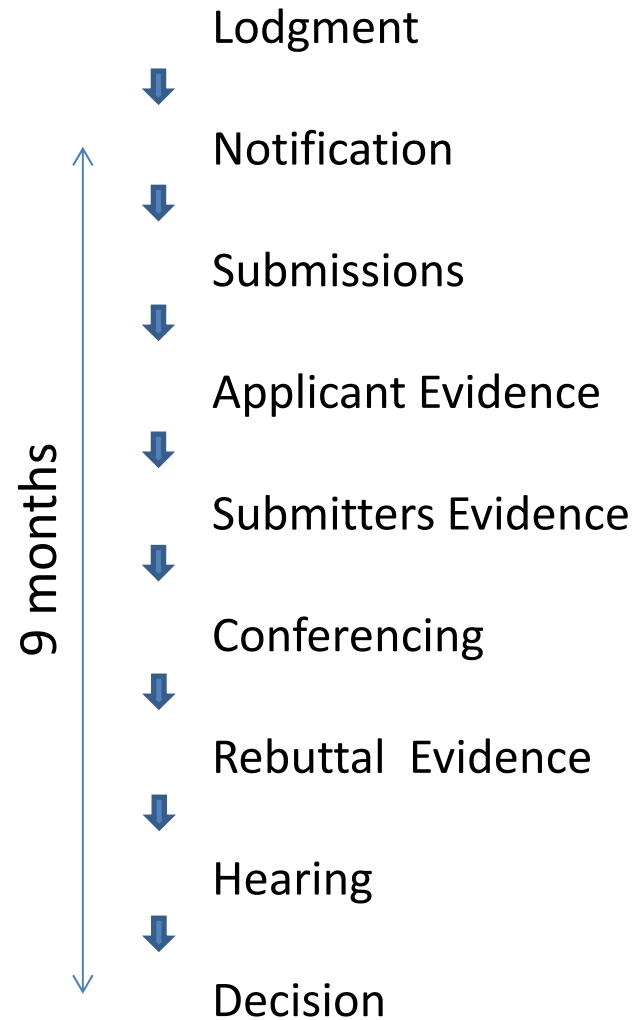


CSM2 and MSRFL – GHD Project 51-30854

- What is the EPA?



- Why the EPA?
- EPA process



- Experts – 28 experts from 16 organisations
- Approach taken
 - EPA early review of key design areas
 - proactive consultation
 - MOU's (signage, noise, visual)



Outcome and key success factors

CSM2

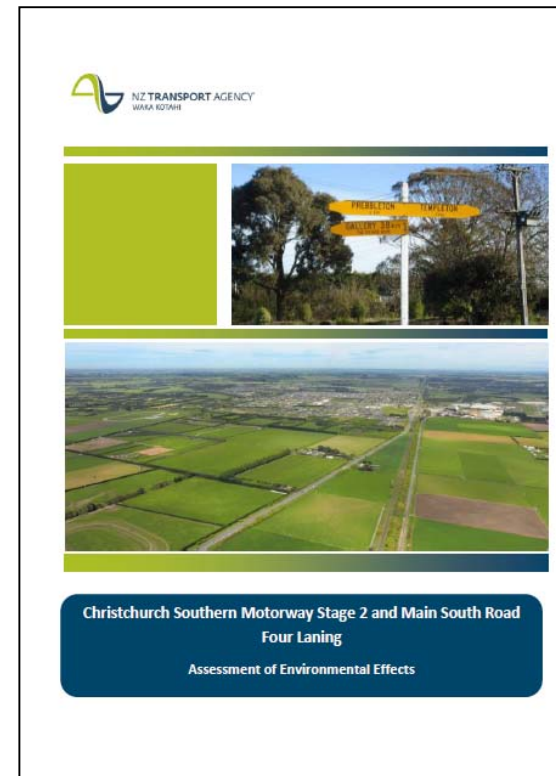
- Minimal submissions – 6 day hearing
 - Board approved conditions ‘as lodged’
 - Excellent Client feedback
 - NZPI award
-
- **Collaborative approach**
 - **Programme management**





- Assistant to the Team Leader
- Started July 2013
- Final design mid-2015
- Construction start early-2016

- EPA phase – July 2012 to November 2013
- Conditions approved as lodged
- Collaborative approach
- Programme management



Questions?