

# Heretaunga street East-Havelock Road corridor study

presented by michele Frey,  
opus





# Heretaunga street East-Havelock road corridor study

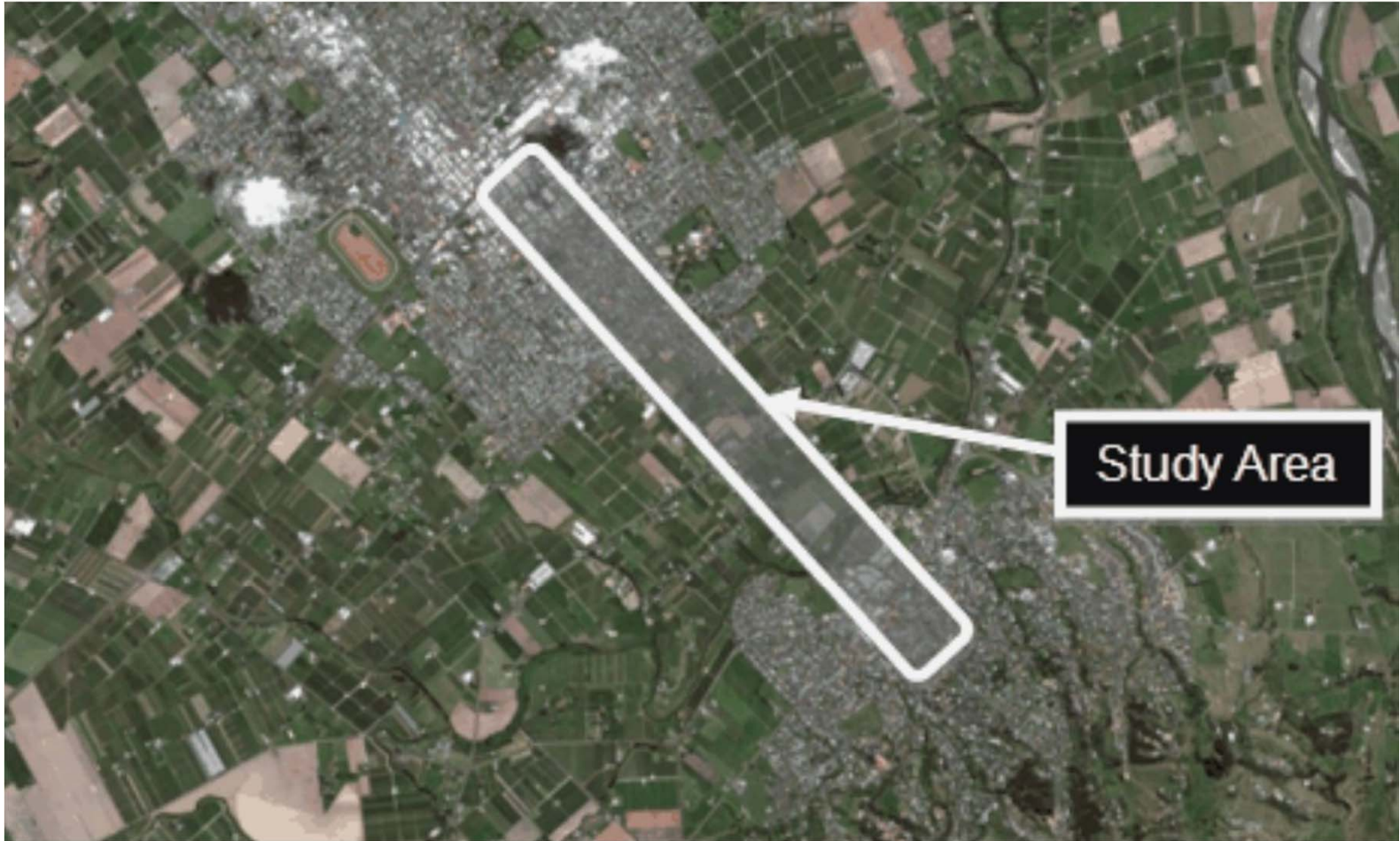
presented by michele frey,  
opus



there were five key  
stages to this project



there were five key stages to this project



# stage 1

understanding current rationale for using various modes of transport and in particular, developing an understanding of barriers to sustainable transport means



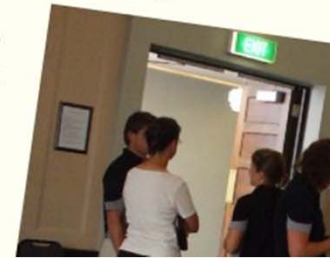
## stage 2

understanding the motivators for a shift in modes of transport. in other words, this exercise sought to understand the motivators behind a change in modal choice if it were to happen



## stage 1

understanding current rationale for using various modes of transport and in particular, developing an understanding of





stage 3



understanding current  
and predicted future  
land use and density  
projections along the  
corridor

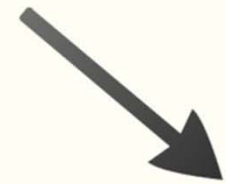


stage 4



understanding current  
and predicted future  
land use and density  
projections along the  
corridor

develop a series of  
recommendations to  
manage the corridor and  
adjacent areas such as  
design standards, district  
plan stages (regulations,  
rules and guidelines/  
framework approaches).



stage 5







manage the corridor and adjacent areas such as design standards, district plan stages (regulations, rules and guidelines/ framework approaches).



stage 5



Identifying how to accommodate those design features necessary to facilitate modal shift in sequential stages over the next 35 years





# conclusion

in 2045 the corridor will provide an attractive route for transportation between the Havelock North and Hastings urban centres by a variety of convenient modes. This will be achieved through ensuring continued efficient use is able to be made of the corridor by vehicles, both private and commercial, and by a range of other equally attractive modes, most particularly public transport (bus or tram) and cycle.

# Heretaunga street East- Havelock road corridor study



Questions?