

Transportation Transformation

In the Whakatāne District Council

Presented By: Ann-Elise Moon

Renewed Focus for Roading Managers

- Assets vs Activities



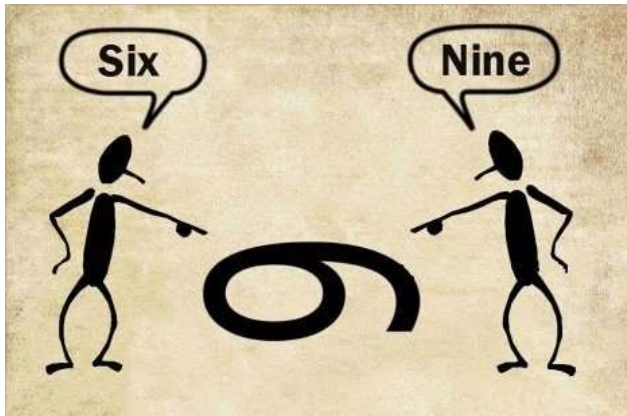
Renewed Focus for Roading Managers

- Why do we even have roads?
- What's their true purpose?



Beginning of the WDC Transformation

- Formation of the 'One Team' approach
- Beginning of enhancing in-house knowledge and network ownership



- Conflicting drivers influencing network programming and fault identification
- Client driven to align with a 'Best for Network' approach

Big step in the WDC Transformation

- ‘Back to the Future’

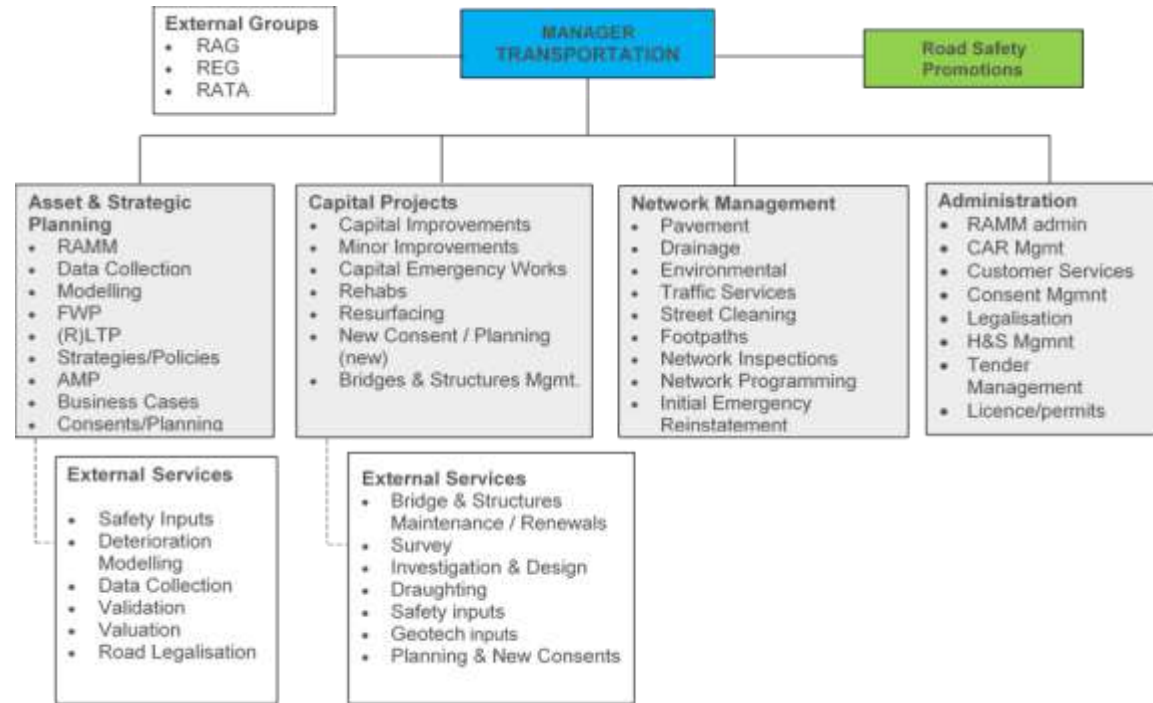


- Establishment of our in-house transportation team

Big step in the WDC Transformation



Big step in the WDC Transformation



Big step in the WDC Transformation

Benefits seen already:

- Customer responsiveness
- Public and political appreciation
- Less 'layers'
- \$\$\$\$ Savings



Where to from here.....?

- Continuous review and improvement
- Transformation in our Procurement Methods
- Supplier Panels.....



Thank you

Any Questions.....?

